



Club Menangle Trackside COVIDSafe Plan

Club Menangle Trackside incorporates facilities falling into the following categories of NSW Government COVIDSafe plans:

- Racecourses
- Food & Drink Premises
- Registered Clubs
- Function Centres
- Major Recreation Facility

October 11, 2021

Version 26

Table of Contents

Revision History.....	3
Purpose of this COVIDSafe Plan.....	4
Management of Venue	4
Capacity	4
Opening Hours.....	6
Recording of Customer Details.....	6
Bookings	6
Functions	6
Markets	6
Separation of Racing Participants and Spectators	7
Wellbeing of Staff:.....	9
Wellbeing of Customers:.....	12
Ventilation	14
Strategy for Dealing with Potential Cases	15
Review	16

Revision History

This plan will be amended from time-to-time as new standards, insights and best practice measures develop. The table below clarifies the details of the versions:

Version	Date	Changes
1	19/05/20	Initial Construction
2	27/05/20	Capacity limits/Opening hours/Separation of Racing Participants & Spectators
3	28/05/20	Booking details
4	03/06/20	Physical distancing measure for racing regionalization /Owners to attend Macarthur Pavilion
5	07/06/20	Security Check points/Venue management contact details
6	30/06/20	Capacity revision, General public in Pavilion Sports Bar/Allow owners outside/Contact Tracing
7	14/07/20	Capacity revision, Contact tracing changes, Venue definition on Title Page
8	22/07/20	Clarification of COVIDSafe marshal & Booking restrictions
9	03/08/20	Face Masks
10	24/08/20	Temperature Checking
11	24/09/20	Reopening of grandstand seating & Separation of marquee area, Capacity revision
12	21/10/20	Change to outdoor capacity/Compulsory electronic check-in/Increase of maximum booking size.
13	23/11/2020	Markets regulations
14	04/12/2020	Capacity revision/Dance floor addition/Removal masks policy
15	21/12/2020	Tightening of capacity restrictions/Removal dance floors/Reintroduction face masks
16	05/01/2021	Mandatory face mask policy/Capacity revision/Check in via Service NSW app
17	12/02/21	Removal mandatory face mask policy/Capacity revision, integration spectators and participants
18	26/02/21	Removal grandstand restrictions, temperature checking/Reopening Playground
19	29/03/21	Removal dancing restrictions and temperature checking.
20	06/05/21	Reintroduction masks, prohibition of standing consumption, indoor singing/dancing
21	17/05/21	Repealing masks, standing consumption, indoor singing/dancing restrictions
22	18/06/21	Reintroduction masks for front of house staff
23	22/06/21	Reintroduction masks for gaming room
24	23/06/21	Return 4m ² rule, no standing consumption, no internal singing/dancing
26	11/10/21	Reopening of facilities in line with the Public Health (COVID-19 General) Order 2021

Purpose of this COVIDSafe Plan

This COVIDSafe plan details standards and best practice for the club industry with specific tailoring to reopening of the **Club Menangle Trackside located at Racecourse Avenue, Menangle Park**.

It incorporates and draws information from a range of materials:

- The Safe Work Australia (SWA) guidance for the hospitality industry
- The National COVID-19 Coordination Commission
- Industry reopening standards discussed between Clubs NSW and the NSW Government
- HRNSW COVID-19 Pathway Protocols
- Existing legislative obligations, particularly the *Work Health and Safety Act 2011 (NSW)*, *Registered Clubs Act 1976 (NSW)* and *Food Act 2003 (NSW)*
- Public Health Orders (COVID-19 Restrictions on Gathering & Movement)

The policies and procedures outlined in this COVIDSafe Plan will help to make the premises a safe environment in which to work and visit. All staff, as part of the induction process, will be required to be familiar with this Plan.

Management of Venue

The management of the venue and on-premises license will be carried out by Club Menangle management and will comply with all directives detailed in this COVIDSafe Plan.

This Plan can be viewed and downloaded from the club website, obtained from the club or sent by email or post.

Title	Name	Telephone	Mobile	Email
CEO	Bruce Christison	02 4645 2200	0438 398 214	bchristison@clubmenangle.com.au
GM Racing Operations	David Wonson	02 4645 2200	0438 398 251	dwonson@clubmenangle.com.au
GM Hospitality	Steven Moore	02 4645 2200	0429 515 864	smoore@clubmenangle.com.au
GM Facilities	Ken White	02 4645 2200	0438 398 230	kwhite@clubmenangle.com.au

Capacity

Club Menangle Trackside's capacity is determined by the regulations applicable to major outdoor recreation facilities. A major recreation facility means a building or place used for large-scale sporting or recreation activities that are attended by large numbers of people whether regularly or periodically, and includes theme parks, sports stadiums, showgrounds, racecourses and motor racing tracks.

Under the Public Health (COVID-19 General) Order 2021 effective October 11, 2021:

The Minister directs that the occupier of a recreation facility (major) must ensure the maximum number of persons on the premises is the number of persons equal to—

- (a) 75% of the fixed seating capacity of the premises, or
- (b) 1 person per 4 square metres of space in the premises.

(2) The occupier of premises in the general area that is a recreation facility (major) must not allow more persons on the premises than the number of persons equal to the lesser of the following—

- (a) 1 person per 4 square metres of space in the premises,
- (b) 5,000 persons.

(3) Subclause (1)(a) may be relied on by an occupier only at times when—

- (a) admission to the premises is by way of a ticket, and

(b) all persons on the premises, other than persons engaged in work, are assigned to specific seats.

Club Menangle will be utilizing the density limit of 1:4m² to calculate total capacity. Utilising the total publicly accessible area of Club Menangle trackside at 15,196m² the total external capacity is 7,598 whilst internal capacity is 910. Total venue capacity totals 8,508 inclusive of staff and children.

Under current restrictions this means the total capacity of Club Menangle Trackside is 5,000, consisting of 910 in internal areas and 4090 externally.

Figure 1. Total publicly accessible area of Club Menangle Trackside (15,196m²)



Club Menangle Trackside will operate 4 different internal areas at race meetings, classified as Food and Beverage Premises.

- 1 – Miracle Mile Restaurant
- 2 – Macarthur Pavilion & Winning Post Café
- 3 – Rex Horne Grandstand Level 2
- 4 – Tanyia Harris and Lawn Marquees

Table 2: Individual room capacities.

Area	Size	Capacity (1:4m ²)
Miracle Mile Restaurant	919m ²	229
Macarthur Pavilion	945m ²	236
Rex Horne Grandstand Level 2 (Can be split into thirds).	681m ²	170
Tanyia Harris and Lawn Marquees	1227m ²	306(LM – 200, THM – 100)

Each of these areas will have access to restrooms that does not require walking through another dining area. Patrons will not be permitted to access dining areas other than the one they have been assigned to.

Each area will have signage at its entrance notifying guests of the total capacity. Floor markings combined with bollards will direct traffic and encourage physical distancing where crowding may occur.

A swing tag system will help staff to police this and prevent co-mingling of guests from different dining areas when multiple dining areas are in use.

Opening Hours

Tuesday- 1pm-6pm*

Saturdays- 5pm-10pm*

*These times are subject to change based on the racing schedule

Recording of Customer Details

All patrons and participants will be required to record their attendance through the Service NSW app via the venue specific QR code. For customers who do not have a mobile phone reception staff will upload their details to the online form.

Following the completion of the check-in process through the Service NSW app:

Guests will still be required to sign in abiding by the Registered Clubs Act directives for temporary members.

Existing Members will be required to show their card to enter the club.

Bookings

Bookings will be limited to a maximum of 20 in total size.

Bookings will be taken via the Club Menangle website and office. A flexible booking system is in use where cancellation is available due to COVID-19 factors.

Bookings will be time based and staggered where possible to minimize crowding.

A dinner service will be in operation during metropolitan race meetings only.

If there is no vacancy, entry will be refused.

Functions

No events will be conducted at this time.

Markets

Markets will not be conducted at this time.

Risk Assessment

Hazard	What is the harm that the hazard could cause?	What is the likelihood that the harm would occur?	What is the level of risk?	What controls are currently in place?
COVID-19 from customers who are infected	Staff or other customers catching COVID-19 (could result in serious illness or death).	Low, there have been few cases locally.	Moderate, while there are only a few local cases the consequences may be severe.	Cleaning and disinfecting frequently touched surfaces. Physical distancing, seating has been removed and set seats for customers to encourage. A floor plan is also available to show capacity of each area. No more than 50 customers are allowed each dining area of the venue. The capacity of each dining area will be clearly communicated and monitored. Contactless payments are encouraged. Alcohol based hand sanitiser is provided at all touchpoints and on entry to the venue (out of reach of children). Posters on hand washing are prominent in all bathrooms.
COVID-19 from staff who are infected	Other staff or customers catching COVID-19 (could result in serious illness or death).	Low, there have been few cases locally.	Moderate, while there are only a few local cases the consequences may be severe.	Cleaning and disinfecting frequently touched surfaces. Staff have been briefed on symptoms of COVID-19 and have been told to stay home if they aren't feeling well. If a staff member becomes unwell at work, a process is in place to isolate them and arrange for them to be sent home to receive medical attention. Staff presenting with flu-like symptoms will be required to self-isolate. Alcohol based hand sanitiser is also available in all staff areas and service points. Staff meetings are held over video link and information sent by email where possible. Break times (if applicable) are staggered to minimise the number of staff using break room at one time.
Customer aggression	Physical or psychological injury to staff.	Moderate, customers may become frustrated by new requirements	Moderate, There is extensive communication on all new requirements.	There is always a manager rostered on to assist with customer complaints. PPE will be made available to security staff in the event they may need to come within close contact of a customer. Processes are in place to ban abusive and violent customers from the venue or call police.
Persistent use of hand sanitiser	Dermatitis	Moderate, many staff will not have used hand sanitiser regularly before	Moderate, affected individuals may have a significant reaction	Staff are encouraged to wash hands with soap and water for 20 secs where possible as an alternative to hand sanitiser in non-medical situations
Persistent use of latex gloves	New or aggravated latex sensitivity	Low, most gloves will not be latex based	Moderate, affected individuals may have a significant reaction	Staff are provided with non-latex gloves or remove gloves when not necessary.

Segregation of participants and on-course patrons will be enforced until 12.01am on Sunday 12 December 2021 but will be reviewed by HRNSW for the Inter Dominion Carnival Meetings. Spectators will be permitted on track from October 12th 2021. Throughout the duration of their visit there will be no mingling between spectators and participants.

Figure 3 illustrates the separation of participants and spectators prior to entry to the venue into separate car parks.

Figure 3. Entry to Premises



Racing Participants and Spectators will be separated before the Club Menangle Admin building. Racing participants will travel around the back of the main track to their car park at the rear of the stable area. Spectators will continue to the main carpark

Figure 4 illustrates the separation of spectators and participants within the venue. There are 3 separate zones of control for persons on site. Entrants will be required to check in via the Service NSW app to the respective area, there are separate QR codes for both the spectator and participant zones.

Security Checkpoints at the entry for both the spectator and participant areas will screen entrants to ensure they are compliant with all NSW Health & HRNSW directives. Checkpoints will have additional staff to prevent crowding. Hand sanitizer will be available in the event of bag checks being required.

Figure 5 illustrates physical barriers separating the two zones. It also details the division of facilities available to both spectators and participants once inside the venue. Separate food outlets, toilets and race viewing areas are available in each zone. Zones are separated by physical barriers detailed on the map.

Figure 4. Entry to the venue

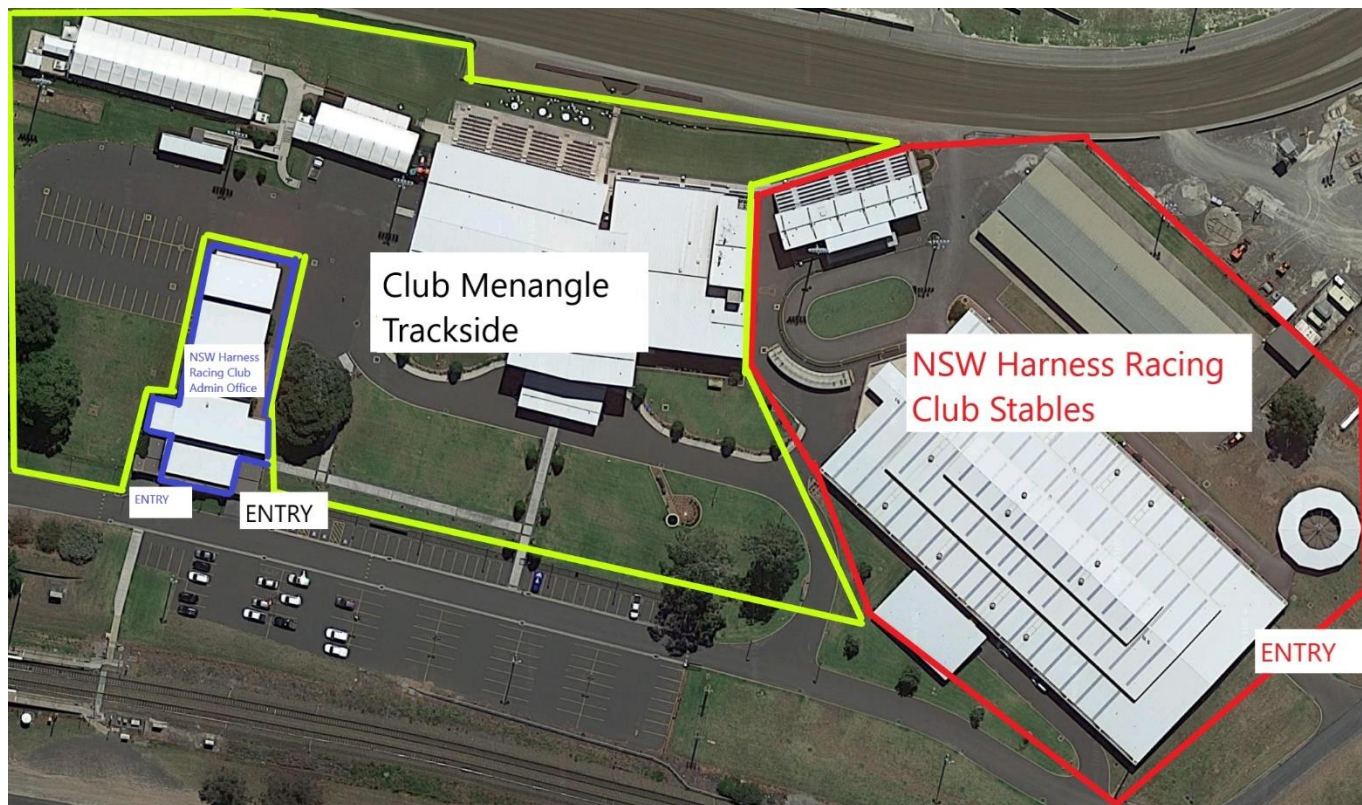
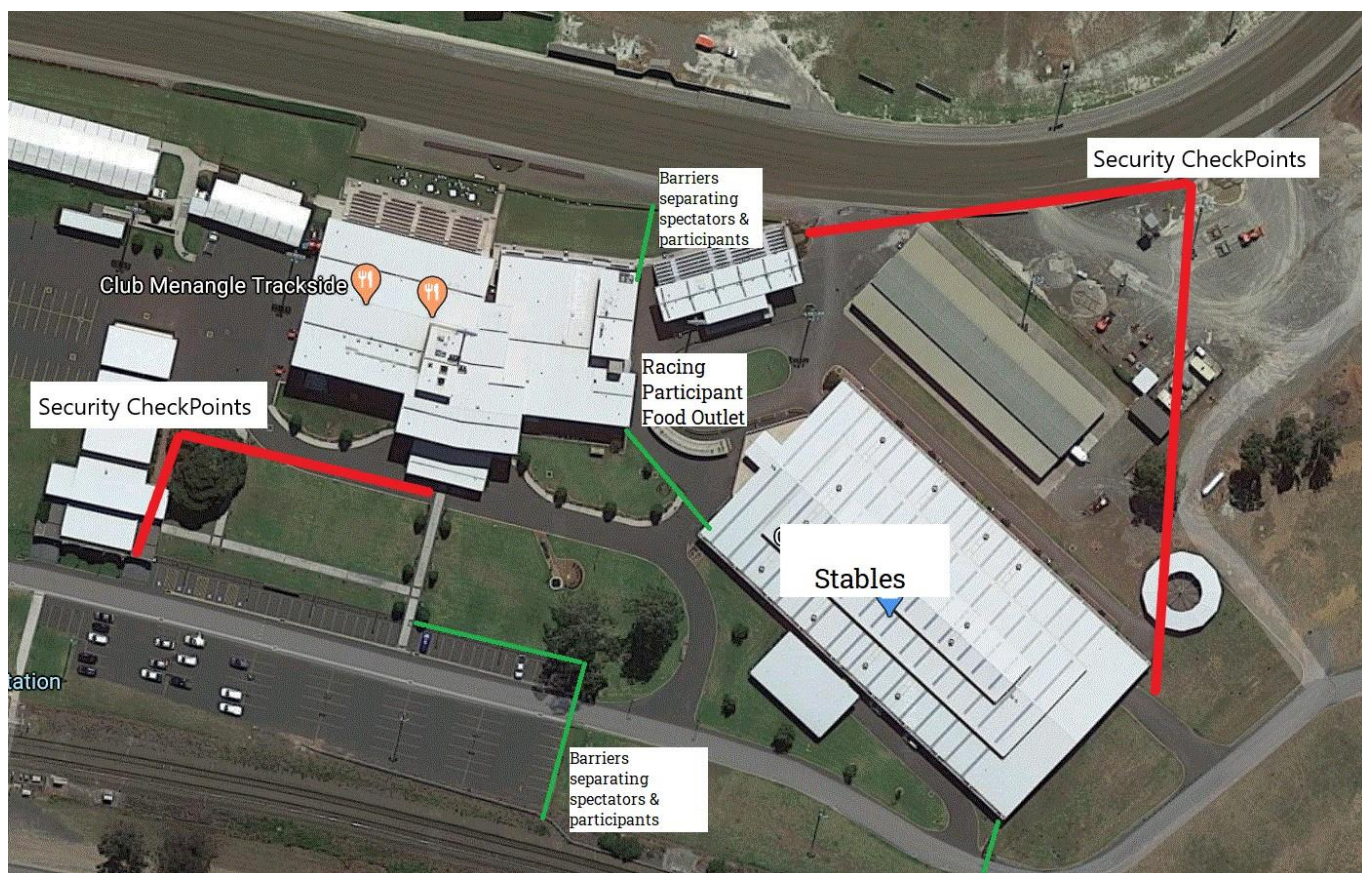


Figure 5. Internal separation of spectators and participants.



Wellbeing of Staff:

Exclusion

Most importantly, if any staff are experiencing flu-like symptoms (such as sore throat, cold, cough, aches, or shortness of breath) they will not be permitted to work, self-isolate for 14 days pending the results of a test for COVID-19.

Staff are aware of leave entitlements should they be required to self-isolate.

Staff Training

All staff have completed the Australian Government Department of Health Infection Control COVID-19 Certificate.

Further training will be provided to all staff to comply with the below areas of control.

Access to vaccination

Staff have been encouraged to get vaccinated and provided with the details of local vaccine providers and the booking process. Staff are granted leave to get vaccinated and recover from vaccination.

Proof of Vaccination

All staff will be required to show proof of vaccination to work at Club Menangle venues. This proof will be sighted by Club Management and staff will be required to produce proof of vaccination when requested. This proof may be in the form of:

- COVID-19 digital certificate can be accessed through the [Express Plus Medicare mobile app](#) or Medicare online account through [myGov](#). The COVID-19 digital certificate can be added to a smartphone wallet or similar. Visit [Services Australia](#) for instructions.
- Printed version of the COVID-19 digital certificate or immunisation history statement (available through myGov).

For people without a Medicare card:

An immunisation history statement can be obtained from the Australian Immunisation Register

A COVID-19 digital certificate can be added to a smartphone wallet or similar using the Individual Healthcare Identifiers service (IHI service) through myGov.

For people without a smartphone or online access:

A COVID-19 digital certificate or immunisation history statement can be accessed via myGov to download and print. Alternatively, call the [Australian Immunisation Register](#) to request a copy in the post.

For people with a medical exemption:

If you have a medical reason for not receiving the COVID-19 vaccination, speak to your medical practitioner about getting your medical contraindication added to your immunisation history.

Physical distancing

Physical distancing is important because COVID-19 is most likely to spread through close contact with a person who has a confirmed infection. Physical distancing means keeping people apart.

Currently, this means keeping a distance of at least 1.5 metres between people.

The likelihood of interactions causing the spread of COVID-19 is low if physical distancing advice and good hygiene are followed.

Club Menangle staff physical distancing:

- Staggered start times and breaks
- Customer capacity limits
- Use of PPE masks
- Encourage contactless payments

Masks

All customer facing staff will be wearing masks at all times.

Workstations

Where reasonably practical, staff will always maintain 1.5 metres physical distancing (including at meal breaks) and workers will be assigned specific workstations.

Front of house workers can collect food without entering the food preparation area.

Plexiglass barriers have been considered for work areas but deemed impractical.

Start times

Where reasonably practical, start times and breaks for staff members will be staggered to minimise the risk of close contact.

Physical barriers

Bollards will be used to separate customers and staff around service and dining areas

Handwashing and hygiene

COVID-19 is most likely spread from person to person through:

- Direct contact with a person while they are infectious
- Contact with droplets when a person with a confirmed infection coughs or sneezes
- Touching objects or surfaces that are contaminated by droplets coughed or sneezed from a person with a confirmed diagnosis

Good hygiene is necessary to stop the spread. This means:

- frequent hand washing with soap or hand sanitising, including before and after you eat and after going to the bathroom
- limiting contact with others, including through shaking hands
- stop touching your eyes, nose and face
- covering your mouths while coughing or sneezing with a clean tissue or your elbow
- putting used tissues straight into the bin.

If hand sanitiser is unavailable, workers will be regularly given the opportunity to wash their hands with soap for 20-30 seconds.

This will occur after a worker has had contact with a customer, as well as after cash transactions.

It is particularly important workers sanitise or wash their hands before or after touching their face.

Cleaning

Frequently used indoor hard surface areas will be cleaned using commercial grade disinfectant.

Frequently touched areas and surfaces will be cleaned several times per day.

Tables, chairs, and any table settings will be cleaned between each customer.

Signage and Posters

Signs and posters are placed around the workplace to remind workers and others of the risks of COVID-19 and the measures that are necessary to stop its spread.

This includes posters on what is COVID-19 and how we can stop it spreading, how to wash your hands and the physical distancing requirements.

Wellbeing of Customers:

Exclusion

Signage at entry will instruct customers of requirements and notify them that anyone presenting with flu-like symptoms will not be permitted entry.

Conditions of Entry

Conditions of entry will be clearly displayed on public platforms, including on the website, social media platforms and at the venue entrance

Conditions of entry including requirements for vaccination, to stay away if unwell and record keeping will be clearly displayed on public platforms, including on the website, social media platforms and at the venue entrance

On approach to the club entry floor markings have been placed to encourage physical distancing in the event of queueing

Entry will be via a single point assisting with total venue capacity control.

Reception staff will be able to fully brief customers on new requirements for service and point them to their table.

All patrons will be required to record their attendance through the Service NSW app via the venue specific QR code. For customers who do not have a mobile phone reception staff will upload their details to the online form.

All check-in processes will be reviewed by both security and reception staff to ensure compliance.

The reception desk is a high touch area and will be cleaned by staff between each customer interaction.

In the event of possible queuing to sign-in floor markings will denote physical distancing requirements

Proof of Vaccination

All customers will be required to show proof of vaccination or a medical exemption contraindication certificate to gain entry to the Club Menangle. This may be in the form of:

- COVID-19 digital certificate can be accessed through the [Express Plus Medicare mobile app](#) or Medicare online account through [myGov](#). The COVID-19 digital certificate can be added to a smartphone wallet or similar. Visit [Services Australia](#) for instructions.
- Printed version of the COVID-19 digital certificate or immunisation history statement (available through myGov).

For people without a Medicare card:

An immunisation history statement can be obtained from the Australian Immunisation Register

A COVID-19 digital certificate can be added to a smartphone wallet or similar using the Individual Healthcare Identifiers service (IHI service) through myGov.

For people without a smartphone or online access:

A COVID-19 digital certificate or immunisation history statement can be accessed via myGov to download and print. Alternatively, call the Australian Immunisation Register to request a copy in the post.

For people with a medical exemption:

If you have a medical reason for not receiving the COVID-19 vaccination, speak to your medical practitioner about getting your medical contraindication added to your immunisation history.

Masks

All patrons will be required to wear a mask whilst inside the venue when they are not either eating or drinking.

Patrons will not be required to wear masks in external areas.

Live Music

Live music performances will be conducted in external areas only.

Internal singing and dancing will be prohibited.

Crowd Control & COVIDSafe Marshal

All social distancing requirements and practices endorsed by this plan will be monitored by the designated COVIDSafe marshal.

There will be a COVIDSafe marshal rostered for all trading periods, they will be distinguishable by wearing a high-visibility vest.

All directions of the COVIDSafe marshal must be followed, guests who cannot follow these directions will be asked to leave the venue.

Physical distancing

At points of queueing throughout the venue floor markings have been placed to encourage physical distancing. These markings are located at the:

- Club entry
- Bar areas
- EBTs
- ATMs
- Smoking areas

Furniture layout has been modified to encourage distancing within groups who are dining together. There is also adequate distance between different dining groups in the dining area.

Gaming

Both the internal and external gaming areas will be operational.

Machines will be cleaned by staff between each customer interaction and hand sanitiser will be made available in the gaming area.

Food & Beverage Service

Guests must remain seated while consuming beverages in internal areas and must not mingle.

Guests are permitted to stand whilst consuming in external areas but must maintain 1.5m physical distancing.

Guests will order food and beverage from the main bar.

Contactless payments are encouraged via portable terminals.

Customers will receive individually packaged cutlery for their meal. This non-disposable cutlery is washed using a commercial grade dishwasher.

Where possible packaged beverages will be sold in lieu of using glass ware

Menus will be available digitally via QR code

Children's Play Areas

The external children's play area will be open and cleaned regularly.

Signage and Posters

Signs and posters are placed at the entry and in the bathrooms round to remind guests of the risks of COVID-19 and the measures that are necessary to stop its spread. This includes posters on what is COVID-19 and how we can stop it spreading, how to wash your hands and the physical distancing requirements.

Floor markings will be placed in all areas of possible queuing to illustrate distancing requirements

Cleaning & Hygiene

Bathrooms will be fully stocked with hand sanitiser, soap and paper towels to accompany hand dryers. These will be checked periodically by staff to ensure adequate supply.

Hand sanitising stations are available for customers at the entrance to the venue. All surfaces will be thoroughly cleaned before each service.

Disinfectant solutions will be maintained at an appropriate strength and used in accordance with the manufacturers' instructions

Ventilation

The 'COVID-19 guidance on ventilation' has been reviewed and all practical strategies to improve ventilation will be employed as part of this COVIDSafe plan.

Outdoor furniture will be increased and bookings available for all external areas. As required external facilities will be opened to allow customers to remain outside for the duration of their visit.

Where possible windows and doors will be opened to increase natural ventilation.

All mechanical ventilation equipment throughout the venue will be operated to maximise the intake of outside air and reduce recirculation of air

All mechanical ventilation systems have been serviced with new filters installed prior to reopening. Equipment will be serviced regularly following reopening.

The General Manager of Facilities and ventilation contractors have been consulted to optimise indoor ventilation wherever possible.

Strategy for Dealing with Potential Cases

In the event of a COVID-19 case, Club Menangle will be following the guidelines set out by NSW Health:

If a staff member tests positive, whether they are vaccinated or unvaccinated they must self-isolate for 14 days and follow the advice from NSW Health. Once a case is identified all staff will be classed via the contact management procedure and required to act accordingly. Club Menangle will use the risk categories outlined by NSW health to classify all staff:

<https://www.health.nsw.gov.au/Infectious/controlguideline/Documents/contact-risk-assessment-business-community-settings.pdf>

Table 1: Risk categories for people who have had close-range (<1.5m) contact with a case during the case's infectious period, for both **indoor and outdoor** settings.

Type of close-range contact	Masks*	Vaccination status of the exposed person**	
		Partial or none	Full
Direct physical contact†	Yes	Close	Casual
	No	Close	Casual
Conversation while within 1.5 m	Yes	Close	Low risk
	No	Close	Casual
Within 1.5m for more than 1 minute (cumulative over 24hrs)	Yes	Close	Low risk
	No	Close	Casual

* No = Mask not worn or improperly worn by case or contact.

** Fully vaccinated is 14 days following 2nd dose.

† Includes shaking hands, hugging or kissing.

Table 2: Risk categories for people who have shared an indoor space with a case during their infectious period but who have not had close-range (<1.5m) contact.

Size of indoor space* (m2)	Time (mins)	Masks**	Vaccination status of the exposed person†	
			Partial or none	Full
< 100	< 1	Yes	Low risk	Low risk
		No	Casual	Low risk
	1 to 15	Yes or no	Close	Low risk
	> 15	Yes or no	Close	Casual
100 - 300	< 1	Yes or no	Low risk	Low risk
	1 to 15	Yes or no	Casual	Low risk
	> 15	Yes or no	Casual	Low risk
> 300	Any	Yes or no	Low risk	Low risk

* An indoor space is any substantially enclosed area where airflow is impeded by a wall, partition or barrier.

** No = Mask not worn or improperly worn by case or contact.

† Fully vaccinated is 14 days following 2nd dose.

Close contacts Should follow the advice for close contacts:

<https://www.health.nsw.gov.au/Infectious/factsheets/Pages/advice-for-contacts.aspx>

Casual contacts Should follow the advice for casual contacts:

<https://www.health.nsw.gov.au/Infectious/factsheets/Pages/covid-19-casual-contact.aspx>

Casual contacts who have a rapid antigen test (RAT) each day until 14 days have passed since their last exposure to an infectious case are not required to have PCR tests or self-isolate. Casual contacts should not enter healthcare and residential aged care settings until more than 14 days have passed since exposure, unless essential.

Low risk contacts Should monitor for symptoms and get a PCR test and self-isolate if symptoms develop

NSW Health will be informed if 3 or more employees test positive for COVID-19 in a 7-day period. Further advice regarding actions required will be sought from NSW Health if this occurs.

Review

This plan and its guidelines will be reviewed regularly and following each government announcement.

Following any review, modifications will be listed in the revision history.

Any modifications to the plan will be communicated to staff.

Copies of the plan available on the website and at the venue will also be updated in the event of any modification.